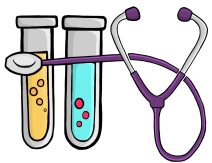


Gram Positives

Gram Negatives

VRE	Staph Epi.	MRSA	VSE	MSSA	Streptococcus	E.Coli	Klebsiela	Proteus	H. Flu	Serratia	Enterobacter	Pseudomonas	ESBL
					Penicillin								
				Nafcillin									
	Vancomycin												
Linezolid/Daptomycin													
					Ampicillin/Amoxicillin								
					Unasyn/Augmentin***								
					Zosyn (Pip/Taz)***								
					Ancef/Keflex (1° Cephalosporins)								
					Cefuroxime (2° Cephalosporins)								
					Ceftriaxone (3° Cephalosporins)								
					Cefepime (4° Cephalosporins)								
					Meropenam***								
					Ertapenam***								
					Aztreonam								
					Amikacin/Tobramycin								
					Levofloxacin								
					Ciprofloxacin								
					Bactrim (TMP/SMX)								



*** = anaerobic coverage

VRE = Vancomycin Resistant Enterococcus

MRSA = Methicillin Resistant Staph Aureus

VSE = Vancomycin Susceptible Enterococcus

MSSA = Methicillin Susceptible Staph Aureus

ESBL = Extended Spectrum Betalactamases

TMP = Trimethoprim, SMX = Sulfamethoxazole

Great coverage

Okay coverage