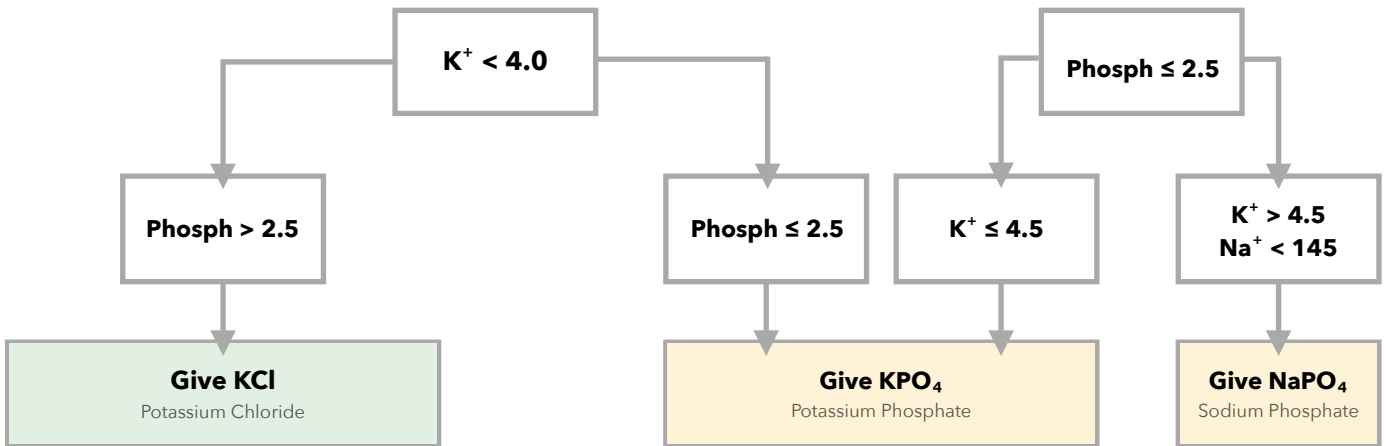


# ELECTROLYTE REPLETION

THEHYMEDICINE.COM



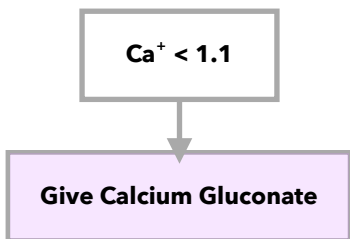
K <sup>+</sup> Level	IV Admin.
3.6 - 3.9 mEq/L	10 mEq IV q1h x 2
3.4 - 3.5 mEq/L	10 mEq IV q1h x 3
3.1 - 3.3 mEq/L	10 mEq IV q1h x 4
2.6 - 3 mEq/L	10 mEq IV q1h x 5
2.3 - 2.5 mEq/L	10 mEq IV q1h x 6

K <sup>+</sup> Level	Enteral Admin.
3.7 - 3.9 mEq/L	20 mEq PO x1
3.5 - 3.6 mEq/L	20 mEq PO q2h x 2
3.3 - 3.4 mEq/L	20 mEq PO q2h x 3
3.1 - 3.2 mEq/L	20 mEq PO q2h x 4

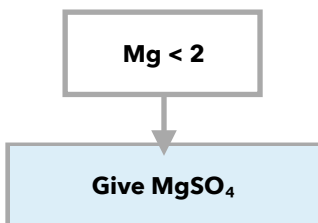
Phosphorus Level	IV Admin.
2 - 2.5 mg/dL	15 mmol IV q4h x1
1 - 1.9 mg/dL	21 mmol IV q4h x1
< 1 mg/dL	15 mmol IV q2h x2

If both K<sup>+</sup> & Phosphorus replacement are required, subtract the mEq of K<sup>+</sup> given as KPO<sub>4</sub> from the total amount of K<sup>+</sup> required

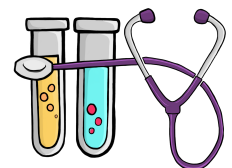
**3 mmols KPO<sub>4</sub> = 4.4 mEq K<sup>+</sup>**  
 15 mmols KPO<sub>4</sub> = 22 mEq K<sup>+</sup>  
 21 mmols KPO<sub>4</sub> = 30.8 mEq K<sup>+</sup>  
 30 mmols KPO<sub>4</sub> = 44 mEq K<sup>+</sup>



Ca <sup>+</sup> Level	Enteral Admin.	IV Admin.
1 - 1.1 mmol/L	1250 mg Calcium Carbonate q12h x 1	1 g Calcium Gluconate IV q1h x 1
0.97 - 0.99 mmol/L	1250 mg Calcium Carbonate q12h x 2	2 g Calcium Gluconate IV q1h x 1
0.85 - 0.96 mmol/L	1250 mg Calcium Carbonate q12h x 4	2 g Calcium Gluconate IV q1h x 1



Mg Level	IV Admin.
1.5 - 2 mEq/L	1 g IV q30m x 2
0.9 - 1.4 mEq/L	1 g IV q30m x 4



THEHYMEDICINE.COM