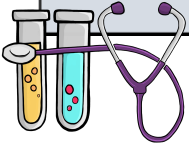


SELF-LIMITING CONDITIONS (REASSURANCE + FOLLOW-UP)	
SELF-RESOLVE BY (MAY NEED INTERVENTION IF PERSIST BEYOND)	DISEASE/CONDITION
2W	Mid 1/3 Clavicular fracture (without neurovascular compromise)
	Erythema Neonatorum Toxicum
6M	Intermittent strabismus
	Cryptorchidism
1Y	VSD
	Milk or soy protein-induced colitis
	Hydrocele
1.5Y	Metatarsus adductus
2Y	Laryngomalacia
	Genu Varum (Bowling of legs)
5Y	Umbilical Hernia
N/A	Intermittent sleep terror



Created by Matthew Ho