

## Wernicke's (receptive) Aphasia - Wernicke is Wordy

- Damage to posterior Temporal Lobe
  - Superior Temporal Gyrus
  - Brodmann's Area 22
- Poor Comprehension, Fluent Speech, Poor Repetition
  - Use of non-existent words
- Right Homonymous Superior Quadrantanopia
  - Meyer's Loop is damaged

## Conduction Aphasia

- Damage to Arcuate Fasciculus
- Good Comprehension, Fluent Speech, Poor Repetition

## Broca's (expressive) Aphasia

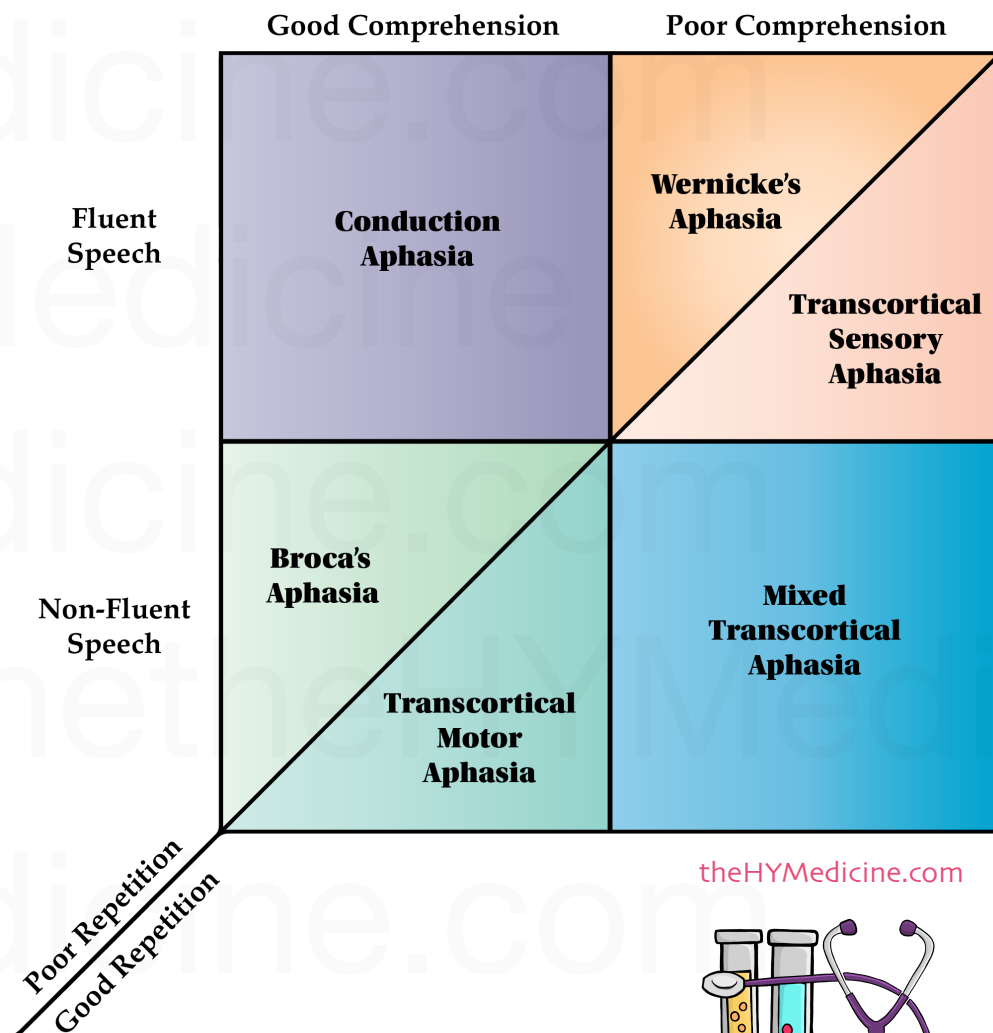
- Lesion to Frontal Lobe
  - Inferior Frontal Gyrus
  - Brodmann's Areas 44 & 45
- Good Comprehension, Non-Fluent Speech, Poor Repetition
  - Dysarthric, Effortful, Telegraphic speech
  - Pt is aware of their problem; unable to express themselves
- Damage may extend to motor cortex
  - Contralateral lower facial & upper limb weakness

## Transcortical Sensory Aphasia

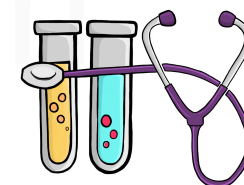
- Damage to watershed area b/w PCA & MCA areas
  - Broca's Area is spared
  - May have hemiparesthesia
- Poor Comprehension, Fluent Speech, Good Repetition

## Transcortical Motor Aphasia

- Damage to watershed area b/w ACA & MCA areas
  - Wernicke's Area is spared
  - May have hemiapraxia/hemiplegia
- Good Comprehension, Non-Fluent Speech, Good Repetition



theHYMedicine.com



## Mixed Transcortical Aphasia

- Damage to watershed area b/w Broca, Wernicke & Arcuate
  - Broca, Wernicke & Arcuate Fasciculus are spared
- Poor Comprehension, Non-Fluent Speech, Good Repetition

## Global Aphasia - Global affects all areas

- Damage to Broca, Wernicke & Arcuate Fasciculus
- Poor Comprehension, Non-Fluent Speech, Poor Repetition